

Become a Regional Trainer

for Generative AI
Readiness in
K-12 Education

Presenters



Sheila King
Chief Strategy Officer
AESA



Robert Duke
Chief Operating Officer
CoSN



Pete Just
AI Project Director
CoSN

Introduction



Overview

Welcome & Overview
of the Opportunity



Importance

Importance of
Generative AI in K-12
Education



Opportunity

The Growing Demand
for AI Readiness

Overview

Welcome & Overview of
the Opportunity



The Initiative

Purpose: Build capacity for generative AI adoption in school districts

Support districts in assessing readiness and developing
AI implementation roadmaps

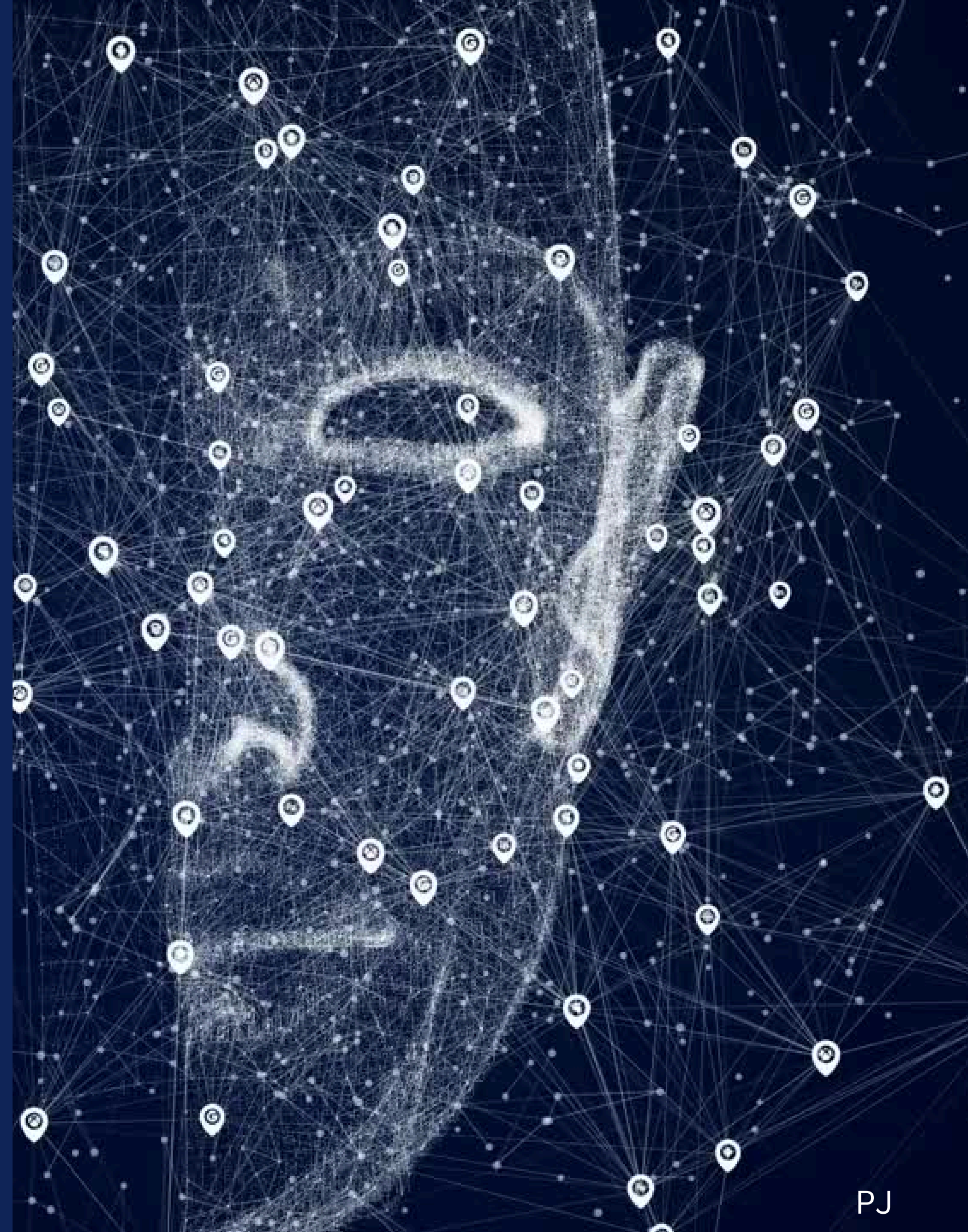
The Role

Regional Trainer

Facilitate impactful training sessions

Empower school districts with actionable AI strategies

Deepen your training expertise



Who We're Looking For

- Seeking exceptional educators and leaders
- Individuals with training experience and a passion for AI in education
- Leaders committed to helping districts navigate generative AI adoption

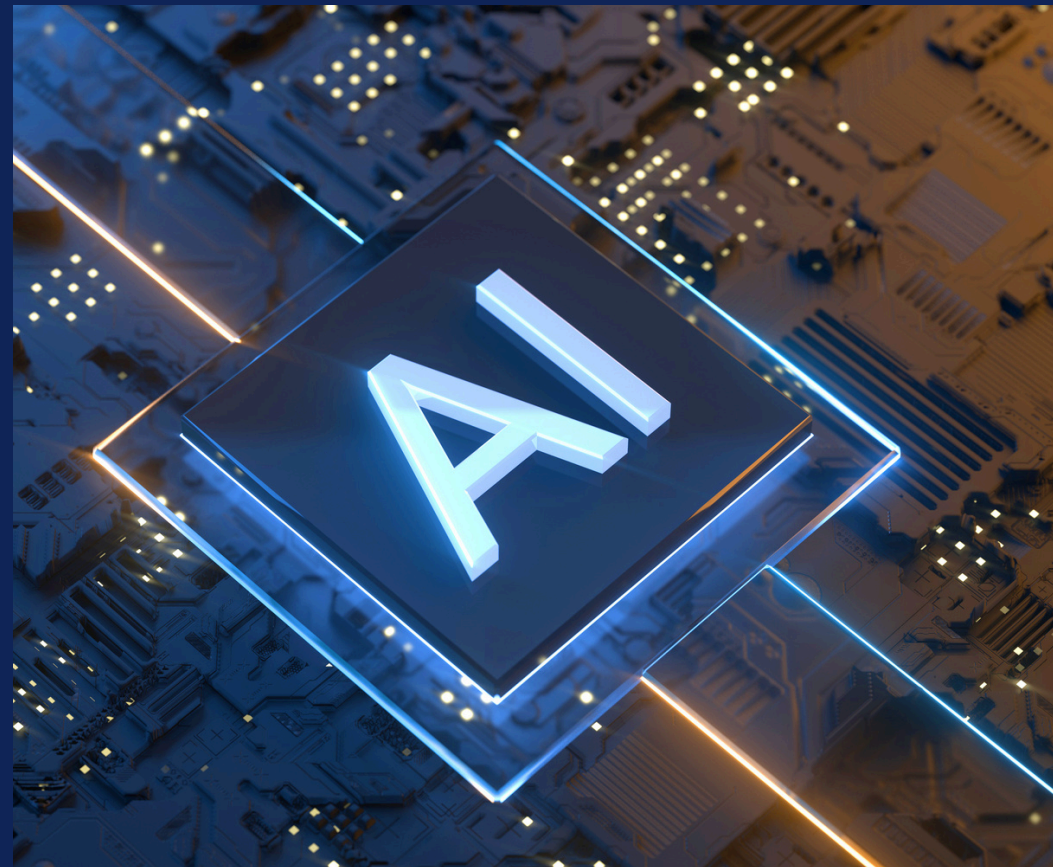


Why Apply?



Influence & Impact:

Directly support districts
in generative AI readiness



Professional Growth:

Expand your expertise in
generative AI



Recognition:

Establish your ESA as a leader
in AI professional development

Regional Trainer Benefits

- Join a national network and share knowledge and best practices with a select group of trainers and K-12 education leaders.
- Receive ongoing coaching from Lead Trainers to strengthen your expertise in areas where you have less experience.
- Earn a digital credential showcasing your leadership role in Gen AI readiness assessment.
- Increase your influence as a thought leader in K-12 AI readiness.
- Establish a sustainable generative AI training program for local school districts.

Organizational Benefits



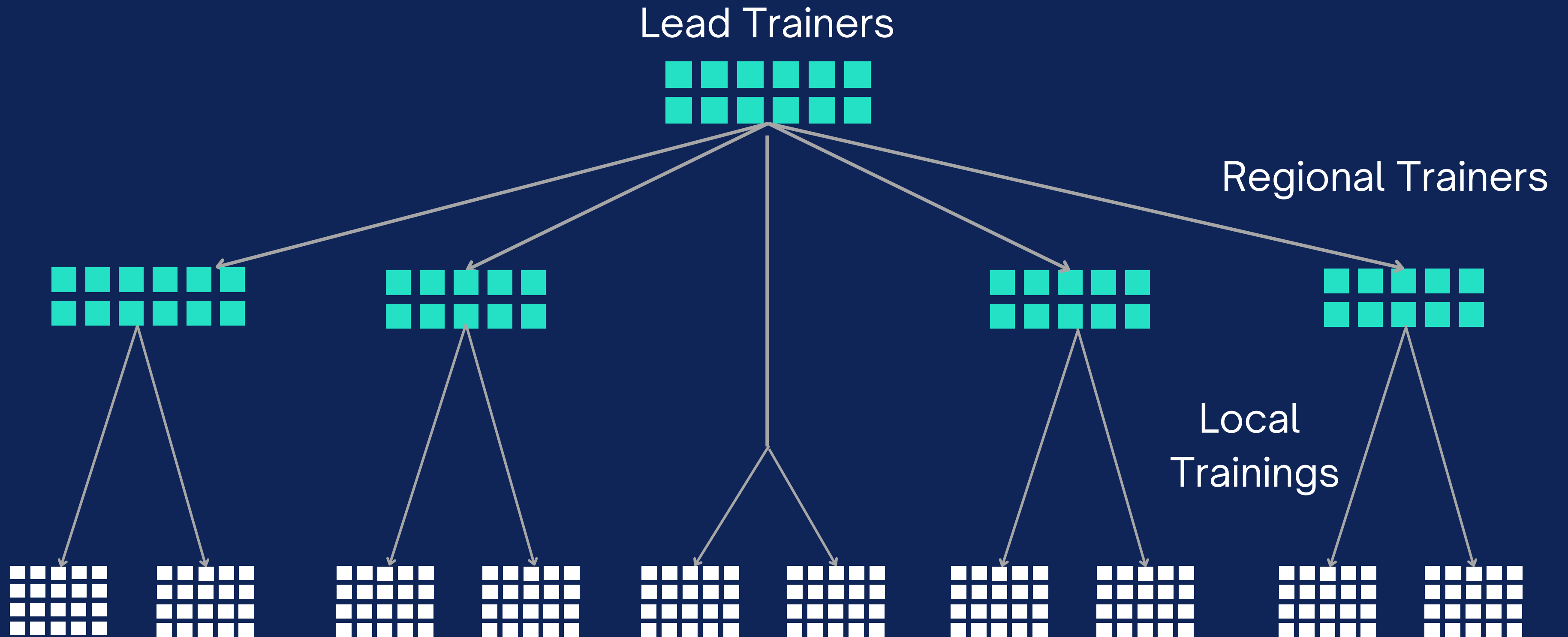
Sustainable Model:

Your ESA retains a portion of the revenue from local training delivery

Enhanced Reputation:

Align with CoSN's nationally recognized framework

Training Levels



Addressing the Urgent Need

School districts urgently need AI expertise and structured guidance

Your leadership will fill this critical knowledge gap

Many administrators and educators lack a clear roadmap for AI implementation



The Training Framework

- Built around the CoSN/CGCS K-12 Gen AI Maturity Tool
- Focuses on Readiness, Maturity Assessment, and Implementation
- Provides a structured approach for generative AI adoption in schools



The Maturity Tool

- **Maturity Levels:**
 - Emerging
 - Developing
 - Mature
- **Readiness Domains:**
 - Executive Leadership
 - Operational
 - Data
 - Technical
 - Security
 - Legal/Risk
 - Academic



Available at: cosn.org/ai/

The Maturity Tool– Dive In

- **Maturity Levels:**
 - Emerging
 - Developing
 - Mature
- **Readiness Domains:**
 - Executive Leadership
 - Operational
 - Data
 - Technical
 - Security
 - Legal/Risk
 - Academic

CoSN & the Council of the Great City Schools present:

K-12 Gen AI Maturity Tool

November 2024

7. Academic AI Literacy Readiness Domain

7.2 Teacher Professional Development in AI

The "Teacher/Admin Professional Development in AI" subdomain focuses on enhancing educators' and school-based administrators' skills and knowledge to effectively integrate AI into their teaching and administrative practices. This subdomain aims to provide comprehensive professional development opportunities that empower teachers and school-based administrators with the latest AI tools, techniques, and pedagogical strategies. It encompasses a range of training and professional development programs designed to elevate teachers' and administrators' proficiency in using AI, from basic introductions to advanced applications in classroom settings. Additionally, this subdomain prioritizes ensuring that educators have ongoing access to up-to-date AI resources, supporting them in staying current with technological advancements. Community building is also a key component, fostering a network of educators who share insights, experiences, and best practices in AI education. The ultimate goal is to cultivate a well-informed and collaborative educator community that leverages AI to enhance student learning and foster an innovative educational environment.

Subdomain Elements	Emerging Level	Developing Level	Mature Level
7.2.1 Training/Professional Development Programs: Providing educators with comprehensive, ongoing training in AI technologies and pedagogical strategies to enhance their ability to effectively integrate AI into their teaching.	Description: Basic AI training/professional development programs are introduced, focusing on raising awareness among educators about AI tools and their potential uses in the classroom. Evidence: Occasional workshops or seminars are offered, primarily introductory in nature. Recommendations: Develop a structured training/professional development calendar that includes AI training at regular	Description: Comprehensive AI training/ professional development programs are established, covering not only the use of AI tools but also pedagogical approaches to integrate AI into teaching. Evidence: There is increased participation in AI training sessions, with educators beginning to implement learned techniques in their teaching. Recommendations: Enhance	Description: AI training programs are deeply embedded in training/professional development for educators, continuously updated to include the latest AI advancements and pedagogical research. Evidence: There are high levels of proficiency in AI integration among educators, with visible improvements in teaching effectiveness and student engagement.

Time Investment

- Attend a 1.5 day in-person Train-the-Trainer session (includes pre/post work)
- Participate in periodic virtual training sessions
- Develop an in-depth understanding of the CoSN/CGCS AI Maturity Model
- Engage actively in the online trainer community
- Work with your coach to deepen your training expertise
- Provide regular feedback to CoSN and AESA

Event Details

Train-the-Trainer Sessions

- Locations tbd
- Dates
 - May 13-14
 - May 29-30
 - June 19-20
 - June 24-25
- Regional Trainers will be aligned to events based on availability and location

- Meet coaches and fellow trainers
- Overview of training materials
- Maturity Model content & process deep dive
- Discussion of best practices for training adult learners
- Overview of process for delivering local trainings

Cost Investment

- \$1,500 training & coaching fee
- Travel, lodging, & per diem for Train-the-Trainer session
- Optional paid CoSN membership
- Licensing fee per participant for local trainings
- Staff and food & beverage costs

CoSN Membership Details

Paid CoSN Membership	Free CoSN Membership
<ul style="list-style-type: none">• CoSN Membership: \$1,220• Licensing fee:<ul style="list-style-type: none">◦ \$399 per participant seat◦ 2-4 10% discount◦ 5-10 15% discount◦ 11+ 25% discount	<ul style="list-style-type: none">• Licensing fee:<ul style="list-style-type: none">◦ \$599 per participant seat

Example: Local Training with 20 Participants @ \$800

Host ESA:	Paid CoSN Membership	Free CoSN Membership
Estimated Expenses	<ul style="list-style-type: none"> • Training & Coaching fee: \$1,500 • Travel to Train-the-Trainer: \$1,100 • CoSN Membership: \$1,220 • Licensing fee: <ul style="list-style-type: none"> ◦ \$399 per participant seat ◦ 2-4 10% discount ◦ 5-10 15% discount ◦ 11+ 25% discount <p>20 x \$399 x -25% = \$5,985</p> <p>Total: \$9,805 + meals & staff costs</p>	<ul style="list-style-type: none"> • Training & Coaching fee: \$1,500 • Travel to Train-the-Trainer: \$1,100 • Licensing fee: <ul style="list-style-type: none"> ◦ \$599 per participant seat <p>20 x \$599 = \$11,980</p> <p>Total: \$14,580 + meals & staff costs</p>
Potential Income	Example: 20 Participants @ \$800 = \$16,000	

Timeline and Next Steps



How to Apply

Visit: <https://www.cosn.org/trainer/>

Submit your application by March 17, 2025 @ 6pm ET

Questions? Contact Catherine Baumgartner
cbaumgartner@cosn.org

Questions/Answers



Closing

Join us in shaping the future of
Generative AI in K-12 Education!

Apply today and become a
recognized leader in AI education

